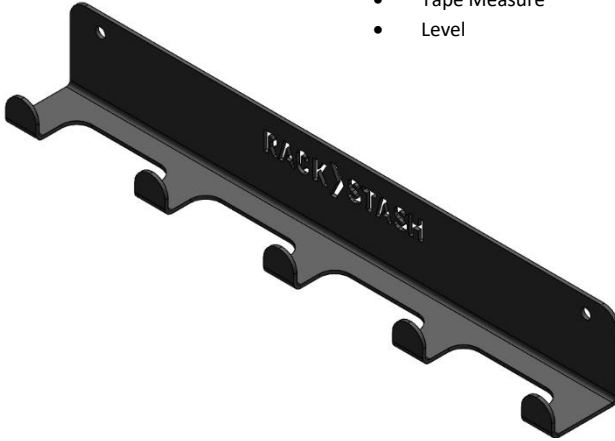


### In the Box:

- RS Multi Hook
- Installation Hardware

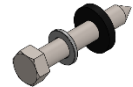
### Tools Required:

- Drill
- 1/4" Drill Bit
- 1/2" Socket and Ratchet
- Tape Measure
- Level



### Installation

- Begin by finding wall location to install. Unit includes mounting hardware for wood construction.
- Use level and tape to mark and drill 1/4" pilot holes in wall for mounting. Mounting holes are spaced at 16".
- Use supplied lag and washers to install unit. Lags should be tightened firmly.



Hardware Install Details

### Additional Instructions

- Use **caution** while taking steps to install RS Multi Hook.
- Additional hardware included to join RS Multi Hook to RS Shelf if applicable.

Questions or comments? Contact our support team via email at [email@1up-usa.com](mailto:email@1up-usa.com)

#### Warning/Disclaimer

Manufacturer and seller expressly disclaim any and all liability for personal injury, property damage or loss, whether direct, indirect, or incidental, resulting from the incorrect mounting, improper use, inadequate maintenance, or neglect of this system.

Manufactured by: 1UP USA

INS49