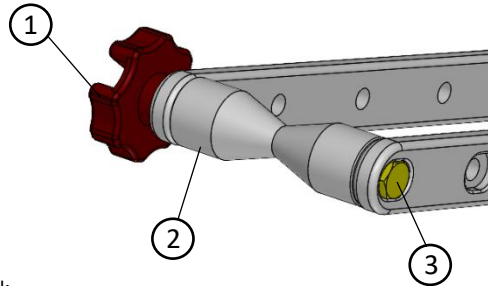


Parts List

- 1) Quik Knob (2)
- 2) Spool*
- 3) Spool Bolt*

Tools Required

- 1) ½" Wrench
- 2) Rack Wrench (optional)

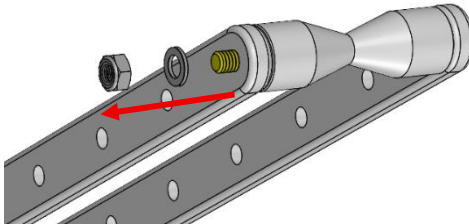


*Denotes parts to be used from existing rack

Assembly

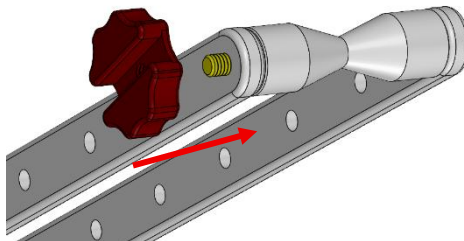
Step 1

- Using ½" wrench, remove existing Spool Nut and Washer from Bike Rack.



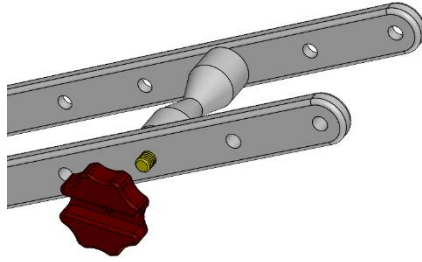
Step 2

- Thread red Quik Knob onto Spool Bolt in place of Spool Nut and tighten by hand.



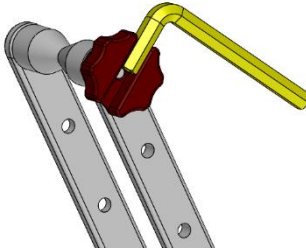
Operation

- To adjust Spool position, remove Quik Knob and Spool Bolt, position Spool at desired location in bent arms, and replace Spool Bolt and Quik Knob.



Optional

- If Quik Knob becomes too tight to loosen by hand, gold Rack Wrench can be used in Quik Knob slot to loosen.



****Periodically check Quik Knob and tighten as necessary to prevent Spool loosening****

Questions or comments? Contact our support team via email at email@1up-usa.com