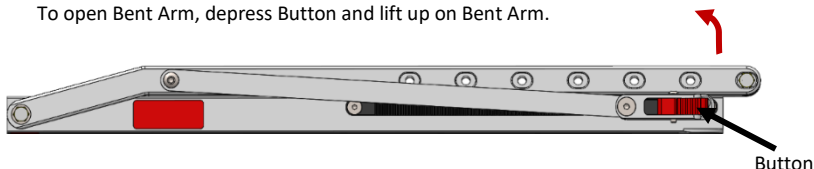


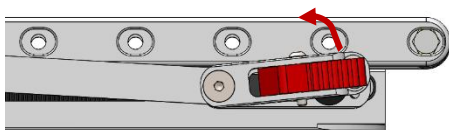
ONE-HANDED RATCHET

Loading Bikes

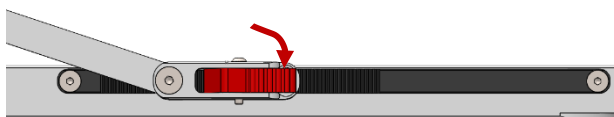
- To open Bent Arm, depress Button and lift up on Bent Arm.



- To disengage Domino, depress Button and lift up on outer Domino as shown below.
- Once Domino is disengaged, Bent Arm will have free motion without depression of Button.



- To re-engage Domino, press down on outer Domino until Button snaps back into place.



Note: *Domino must be engaged to secure bike. Failure to engage Domino prior to transit can result in damage to bike.*

- Open Bent Arms on both driver and passenger side.
- Set bike on Trays in desired position.
- Pivot Bent Arms down to firmly contact tires.
- When loading multiple bikes, stagger them to avoid seat and handlebar interference. E.g., front tire of bike one on driver side, front tire of bike two on passenger side, etc.

Unloading Bikes

- Compress Bent Arm/Spool into tire slightly while depressing Button. This relieves pressure and allows Button to easily unlock.
- Pivot Bent Arm away from tire to unload.
- Repeat unloading process on opposite side.

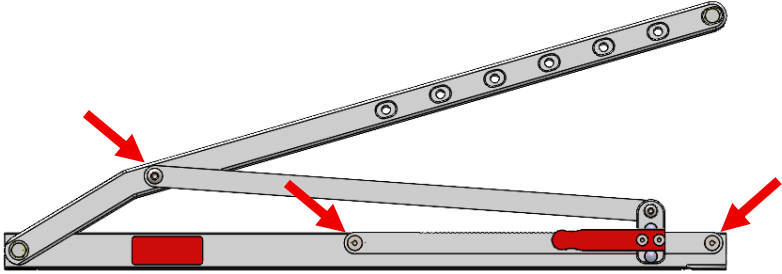
Installation

Tools Needed:

- (2) 1/2" wrenches
- 5/32" Allen wrench
- 3/16" Allen wrench

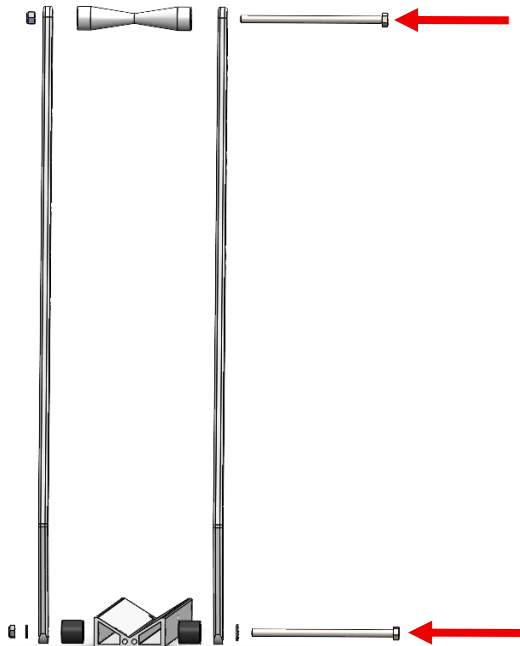
Step 1:

- Remove bolts connecting Strap to Bent Arm and Glide Bar to Tray.
- Repeat on driver and passenger sides.



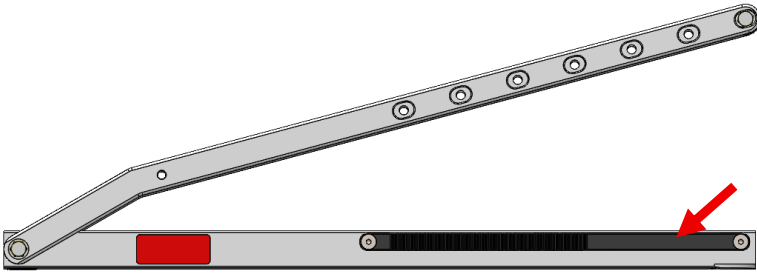
Step 2: (Fat Tire Spacer Installation)

- Remove bolt fastening Bent Arms to Tray using two 1/2" wrenches.
- Remove bolt fastening Spool using 1/2" wrench.
- Replace original spacers with Fat Tire Spacers as shown below, fastening Bent Arms to Tray with provided bolt and jam nylock nut.
- Insert Fat Tire Spool at desired level, and secure with provided bolt and full nylock nut.
- Repeat on driver and passenger sides.



Step 3:

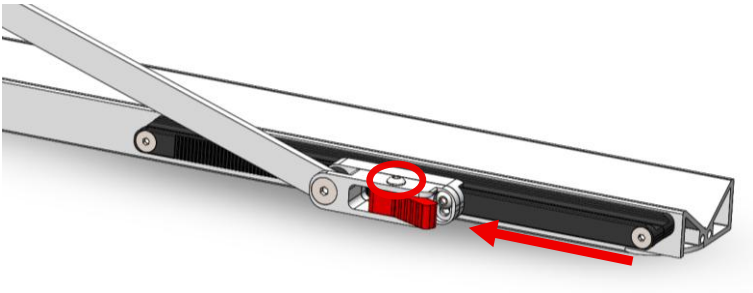
- Position One-Handed Glide Bar with smooth portion towards center of rack, as shown below.



- Attach Glide Bar to Tray with two supplied flat head bolts using 5/32" Allen wrench to tighten.

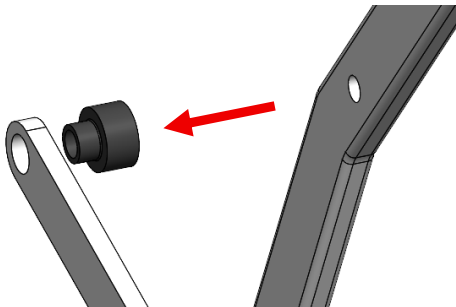
Step 4:

- Ensuring button head bolt on Domino is facing up, and Strap is facing outside of rack, slide Domino onto smooth portion of Glide Bar.



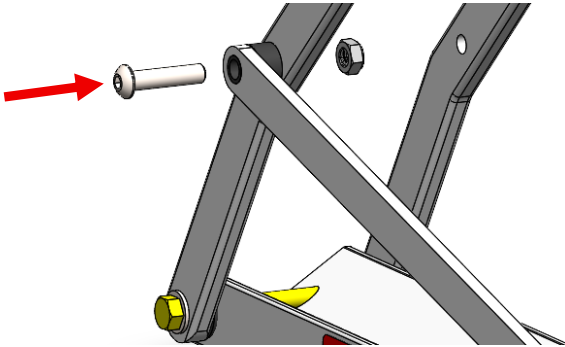
Step 5:

- Insert narrow end of Strap Spacer into back side of open hole on Strap.



Step 6:

- Align hole in Spacer with the hole in Bent Arm, and place button head bolt through both, securing with nut on back side using 3/16" Allen wrench and 1/2" wrench.
 - Check for interference when loading Strap nut and tire. If interference occurs reverse button head and nut orientation (button head to inside of Bent Arm).



Step 7:

- Test for unobstructed movement in assembly by depressing Button on Domino, pivoting upward into disengaged position, and opening Bent Arm. Then, pivot Domino back into engaged position and close Bent Arm, ensuring ratcheting mechanism engages with Glide Bar teeth as it moves.

Step 8:

- Repeat on driver and passenger sides.

Additional Instructions

- Remove road debris off nuts and bolts to prevent corrosion.
- Inspect hardware on Accessory periodically to ensure proper working conditions.
- Certain car wash chemicals may damage Accessory finish. Please use caution when cleaning vehicle and/or Accessory.

Questions or comments? Contact our support team via email at email@1up-usa.com