



V Style Ramp Long - Equip-D

In the Box:

- (1) – Ramp
- (2) – Ramp Hooks
- (4) – 5/16-18 x .625" Button Head
- (4) - .562" OD x .062 Thick Metal FW
- (4) – 5/16-18 Jam Nylok Nut
- (1) – Quick Release Pin
- (1) – Equip-D Mount
- (1) – Security Wrench
- (1) – 3/8" x 5" Spring Pin
- (2) – Security Bolts

Tools Required:

- Security Wrench
- 1/2" Wrench
- 3/16" Allen Wrench
- Multitool

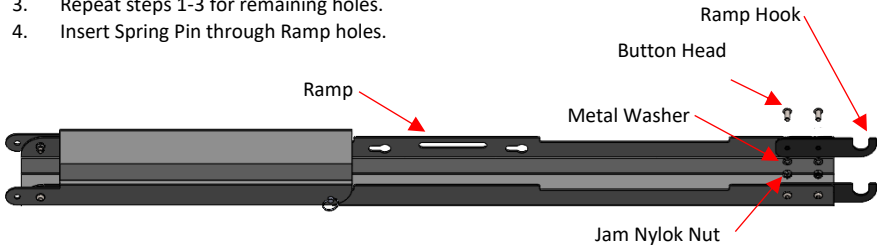


Product Notes:

- Compatible with Equip-D Racks.
- Unit can install on driver or passenger side tray.
- Security Wrench required for assembly.
- Unit can be used opened or closed.

Assembly

1. Insert Button Head through Ramp and Ramp Hook. (See image below for part orientation.)
2. Install Metal Washer and Jam Nylok Nut onto Button Head. Use 3/16" Allen Wrench and 1/2" wrench to tighten.
3. Repeat steps 1-3 for remaining holes.
4. Insert Spring Pin through Ramp holes.



Closed



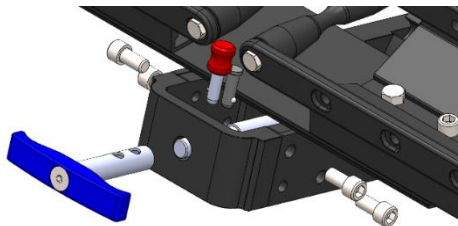
Open



Installation

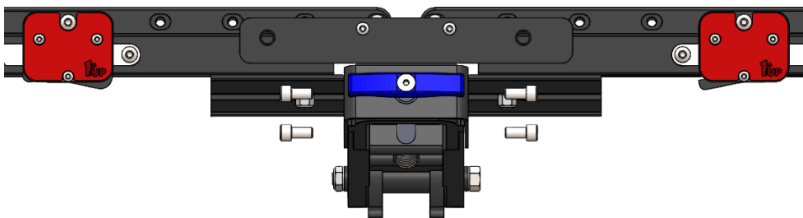
Step 1

Remove Detent Pins and Handle. Use Multitool to remove all four Socket Head Screws from Endcap.



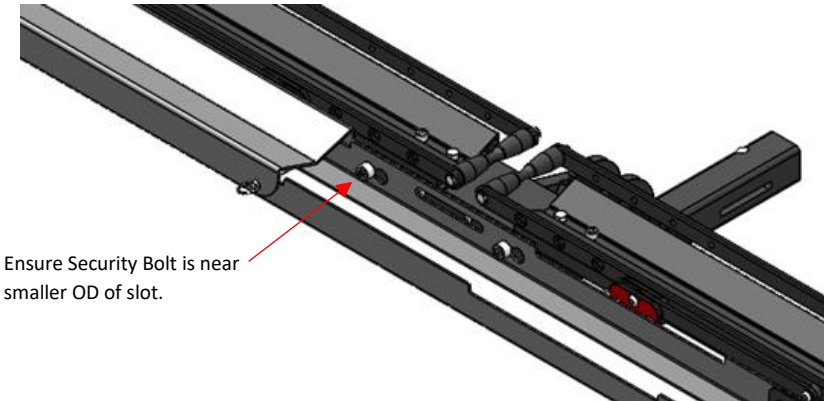
Step 2

Align holes of Equip-D Mount with holes of Endcap. Reinstall Socket Head Screws to secure Equip-D Mount to rack. Tighten firmly. Reinstall Handle and Detent Pins.



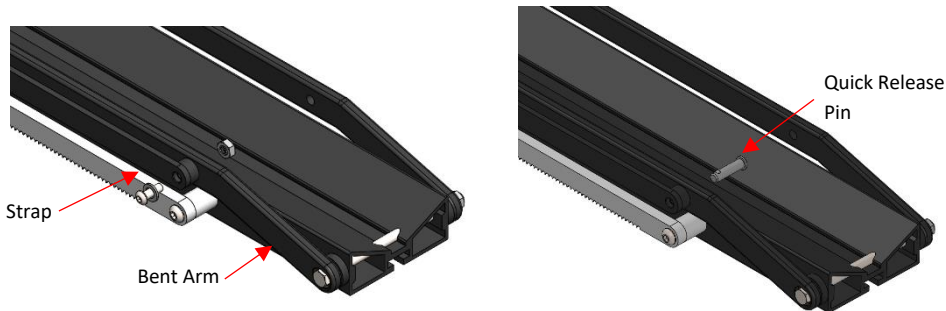
Step 3

Place closed V Style Ramp Long onto rack by aligning keyhole slots with Security Bolts. Tighten Security Bolts.



Step 4

Use 3/16" Allen Wrench and 1/2" Wrench to remove nut and bolt holding Strap to Bent Arm.

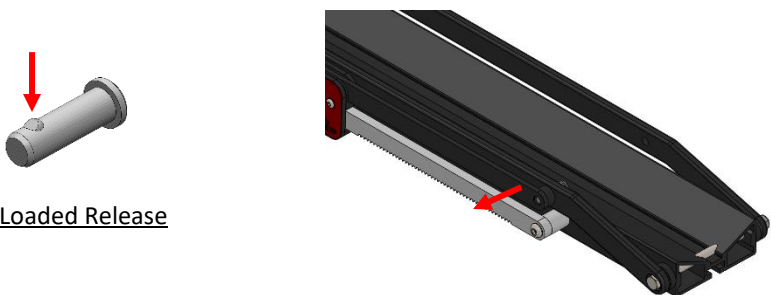


Install Quick Release Pin through Bent Arm, Spacer, and Strap.

Loading Ramp

Step 1

Depress spring loaded release on Quick Release Pin and remove Strap from Pin. Pin will remain in bent arm.



Step 2

Rotate Bent Arms so Spool is near ground. Remove Spring Pin and open Ramp. Insert Spring Pin into open position hole and clip Ramp onto Plastic Spacers.



Step 3

Roll Bike up V Style Ramp Long and onto Rack Trays. Use Bent Arm, opposite of ramp, to stabilize bike while loading.



Step 4

Remove Spring Pin and close Ramp. Insert Spring Pin into closed position hole and install Ramp onto Equip-D Mount. Reinstall Quick Release Pin. Pivot bent arms into tires firmly to secure bike.



Additional Instructions

- Remove road debris off nuts and bolts to prevent corrosion.
- Inspect hardware on Accessory periodically to ensure proper working conditions.
- Certain car wash chemicals may damage Accessory finish. Please use caution when cleaning vehicle and/or Accessory.

Questions or comments? Contact our support team via email at email@1up-usa.com