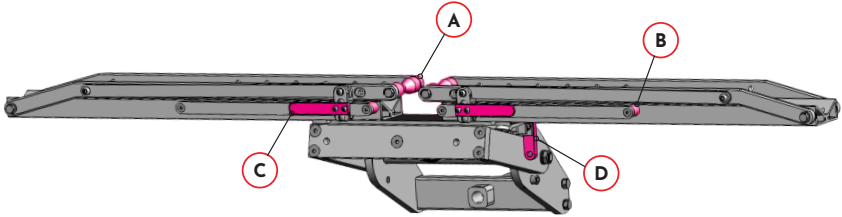


### IN THE BOX

- A Quik Rack Spool    
 B Glide Bar Spacer    
 C Red Lever\*    
 D Blue Lever\*



### PARTS INCLUDED

- (1) Hardware Packet
- (2) Custom Blue Levers\*
- (2) Custom Red Levers\*
- (2) Quik Rack Spools
- (4) Glide Bar Spacers

*\*Custom Color Levers will replace the Red/Blue Levers our instructions refer to.*

### RED LEVERS

Once your rack is properly installed onto your vehicle, follow these steps to attach your Custom Red Levers\*.

### TOOLS REQUIRED

- 1/8" Allen Wrench

### PARTS INCLUDED

- (4) 10-24 x .4375" Flat Head Screw
- (2) Custom Red Levers\*

### INSTRUCTIONS

- 1) Remove Custom Levers\* and bolts from the plastic bags.
- 2) Locate and remove existing Red Levers\* using 1/8" Allen Wrench.
- 3) Position Custom Levers\* and install onto domino using provided fasteners. Be sure to pay attention to direction of levers.



*\*Custom Color Levers will replace the Red Levers our instructions refer to.*



## **BLUE LEVERS**

Once your rack is properly installed onto your vehicle, follow these steps to attach the Custom Blue Levers\*.

### **TOOLS REQUIRED**

- 3/16" Allen Wrench
- 1/2" Wrench

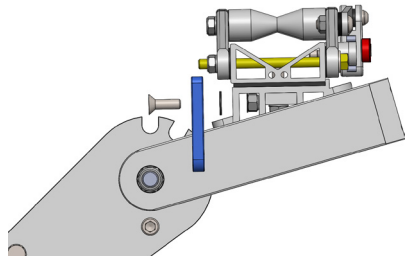
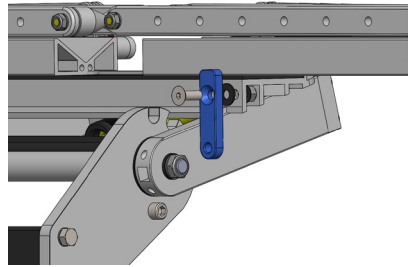
### **PARTS INCLUDED**

- (2) 5/16-18 x 1" Flat Head Screw
- (2) 5/16-18 Nylock Nut
- (2) Large Black Spacer
- (2) Small Black Spacer
- (2) Custom Blue Levers\*

### **INSTRUCTIONS**

- 1) Remove Custom Levers\* and hardware from the plastic bags.
- 2) Locate and remove existing Blue Levers\* using 3/16" Allen Wrench and 1/2" wrench (not supplied).
- 3) Install Custom Levers\* as shown below. Be sure to install large black spacer between Custom Lever\* and 15-degree plate. Small black spacer to be installed between 15-degree plate and nut.
- 4) Use Allen Wrench and 1/2" wrench (not supplied) to snugly tighten fastener. Custom lever\* should stiffly rotate.

**Note:** Periodically tighten flat head fastener to insure secure connection.



*\*Custom Color Levers will replace the Blue Levers our instructions refer to.*

## SPOOLS

### TOOLS REQUIRED

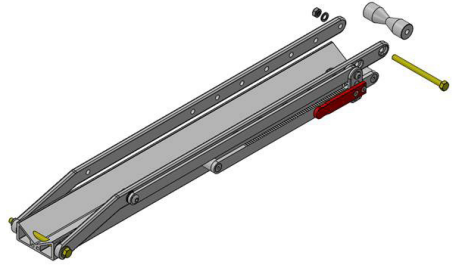
- ½" Wrench

### INSTRUCTIONS

- 1) Be sure to pay attention to order of pieces taken off while disassembling.
- 2) Begin by removing existing bolt from spool on both driver and passenger side trays.
- 3) Replace spool using provided hardware in same order old hardware was removed.

### PARTS INCLUDED

- (2) Quik Rack Spools
- (2) 5/16-18 x 4" Bolts
- (2) Washers
- (2) 5/16-18 Nylock Nut



## GLIDE BAR SPACERS

### TOOLS REQUIRED

- 5/32" Allen wrench

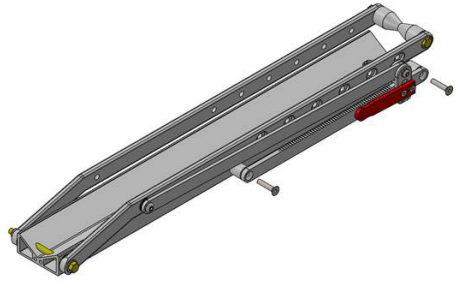
### INSTRUCTIONS

- 1) Remove Flat Head Screw and Aluminum Spacer from plastic bag.
- 2) Locate and remove existing Flat Head Screws and Spacers from rack.

### PARTS INCLUDED

- (4) Glide Bar Spacers
- (4) 1/4-20 x 1.25" Flat Head Screw

- 3) Install Custom Spacers using new Flat Head Screws.



## ADDITIONAL RESOURCES



QUESTIONS /  
COMMENTS?  
SCAN TO  
CONTACT US.